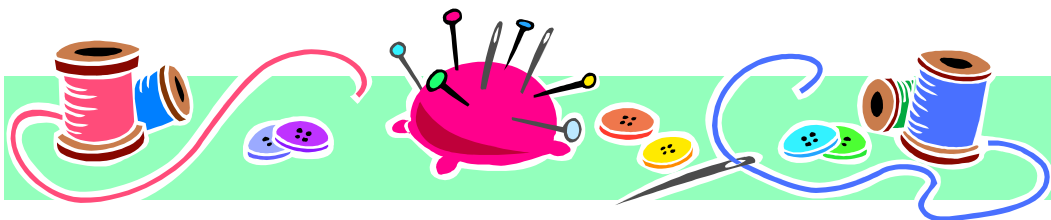


Committee Vacancy

After two years in office, Suzanne Hayward is required to step down as Chairperson of Staffordshire Patchworkers and Quilters and therefore nominations are now being sought for her successor.

More information about the post as well as a nomination form can be obtained from Suzanne Hayward, collected at a group meeting or downloaded from the website at www.spq.org.uk

All nomination forms must be returned by Thursday 3rd February 2011



WE ARE MOVING!

From February 2011 all meetings will be held at

Walton Community Centre, Whitemill Lane, Stone, ST15 0EQ
Tel: 01785 811653

6:45pm for 7:15pm Start

Except 5th May 2010 - location to be confirmed

www.spq.org.uk

Notice of Annual General Meeting

Thursday 3rd March 2011

Walton Community Centre
Whitemill Lane
Stone
STAFFS
ST15 0EQ

6:45pm for 7:15pm Start

Staffordshire Patchworkers & Quilters

Autumn 2010

SPQ Newsletter

A Busy Summer

A number of SPQ members had work on show over the summer. We were represented at the end of July at the Arts and Crafts Festival at St James' Church Acton Trussell, in the south of the county. The church was full over the three day festival with art and visitors and the show was a great success. Thank you to members who loaned their work for the show.

Congratulations to those SPQ members who entered quilts at the Festival of Quilts at the NEC in August. Well done on producing such lovely work, meeting the deadlines and having the courage to display your work at such a prestigious event.



Inside this issue

Contact Information	2
Quilting for a Cause Update	2
Christmas Party	3
About Us	3
Important News	4

Diary Dates

6th November 2010

Christmas Workshop - Swynnerton Village Hall

2nd December 2010

CHRISTMAS PARTY

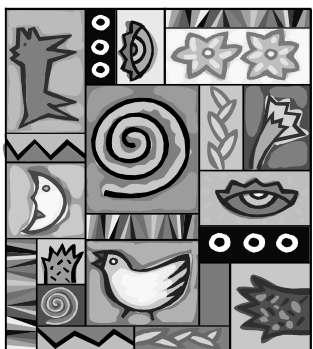
3rd February 2011

Chris Franes - EQ6

3rd March 2011

Annual General Meeting

(see Page 4 for more information)



Committee Contact Information

Chair

Suzanne Hayward
01785 813910

chair@spq.org.uk

Treasurer

Ann Payne
07929 282971

treasurer@spq.org.uk

Secretary

Irene McGranachan
01785 813340

programme@spq.org.uk

Website & Newsletter

Alison Stothard
01785 609592

web@spq.org.uk

*"Good friends are like Quilts. They age with you,
yet never lose their warmth"*



Christmas Party - 2nd December 2010

Join us for our festivities: Bring a plate of food to share. Drinks are provided. Join in the Show and Tell and Christmas Raffle.

THIS YEAR OUR THEME IS A GIFT EXCHANGE AND CRAFT SESSION

Here's the idea:

Make (or buy if you must) a small item - maximum 4" longest side or diameter – obviously it will be 3D but you get the idea. We suggest a Christmas decoration, pincushion, needlecase – use your imagination.

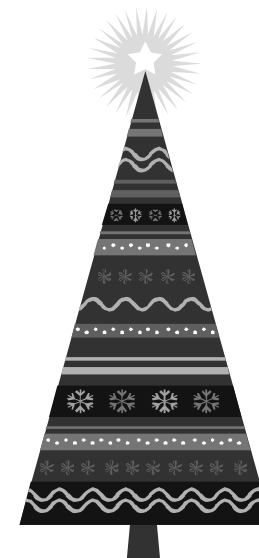
Wrap it and bring it along

Hand the present in and get a raffle ticket in return

Later in the evening when all gifts are in, go and match your raffle ticket to a gift to take home. (We will make sure you don't get your own gift back!)

CRAFT SESSIONS

This year don't just sit and watch but have a go instead. We will have 2 no-sew projects for you to complete during the evening and take home with you. Will you get it done in time or will there just be too much gossip?



About Us

Staffordshire Patchworkers and Quilters was founded in 1982 by Barbara Chainey, making us one of the longest running groups in the region. We have always had an active membership participating in excursions and organising our own informal exhibitions. Over the years a number of our members have been winners at some of the national quilt shows.

We meet the first Thursday of every month except January and August, at Christchurch Centre, Christchurch Way, Stone, ST15 8ZB at 7.00pm for a 7.30pm start.

There is ample parking next to the centre and disabled access.

No membership is required. Admission for 2010 is £4.00. Just pay at the door and come in and enjoy a cuppa and biscuit, show and tell, plenty of chat, and the evening's speaker or activity. If you are feeling lucky why not have a go at the raffle!

We are moving! - See back page for more details

Disclaimer

The views expressed in this newsletter are not necessarily those of the Staffordshire Patchworkers and Quilters or the Editor.

No part of this newsletter may be reproduced without obtaining prior written permission.

Quilting for a Cause Updates

Birmingham Liver Unit

Tom and Hilda's hard work making and raffling some lovely turned wooden bowls and a wonderful quilt achieved a total of £1020 for the Liver Unit at Queen Elizabeth Hospital in Birmingham. Well done to them and our best wishes for Andrew's continued improvement.

Quilters' Guild

Congratulations to Paula and her many helpers who had a stand at the Eccleshall Show in June 2010 and raised over £300 to support the Quilters' Guild of the British Isles.

Quilts for Valour

Ann Edwards and her team of volunteers are busy assembling the 100+ blocks donated so far into quilts for the Quilts for Valour Foundation UK. These will be distributed to injured British soldiers.